

Steve Lovelace



Graphic Design Portfolio

Table of Contents

1

CISDR Magazine/Newspaper Insert

2

Dream Achievers Breakfast Program

3

Map of German Brands

4

CISDR Billboards

5

NCJW Luncheon “Save the Date”

6

CISDR Annual Report

7

Christian Care Hospice Brochure

8

Line Drive Luncheon Program

9

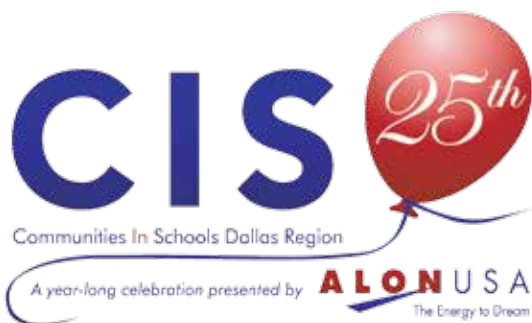
steve-lovelace.com



Special Advertising Section

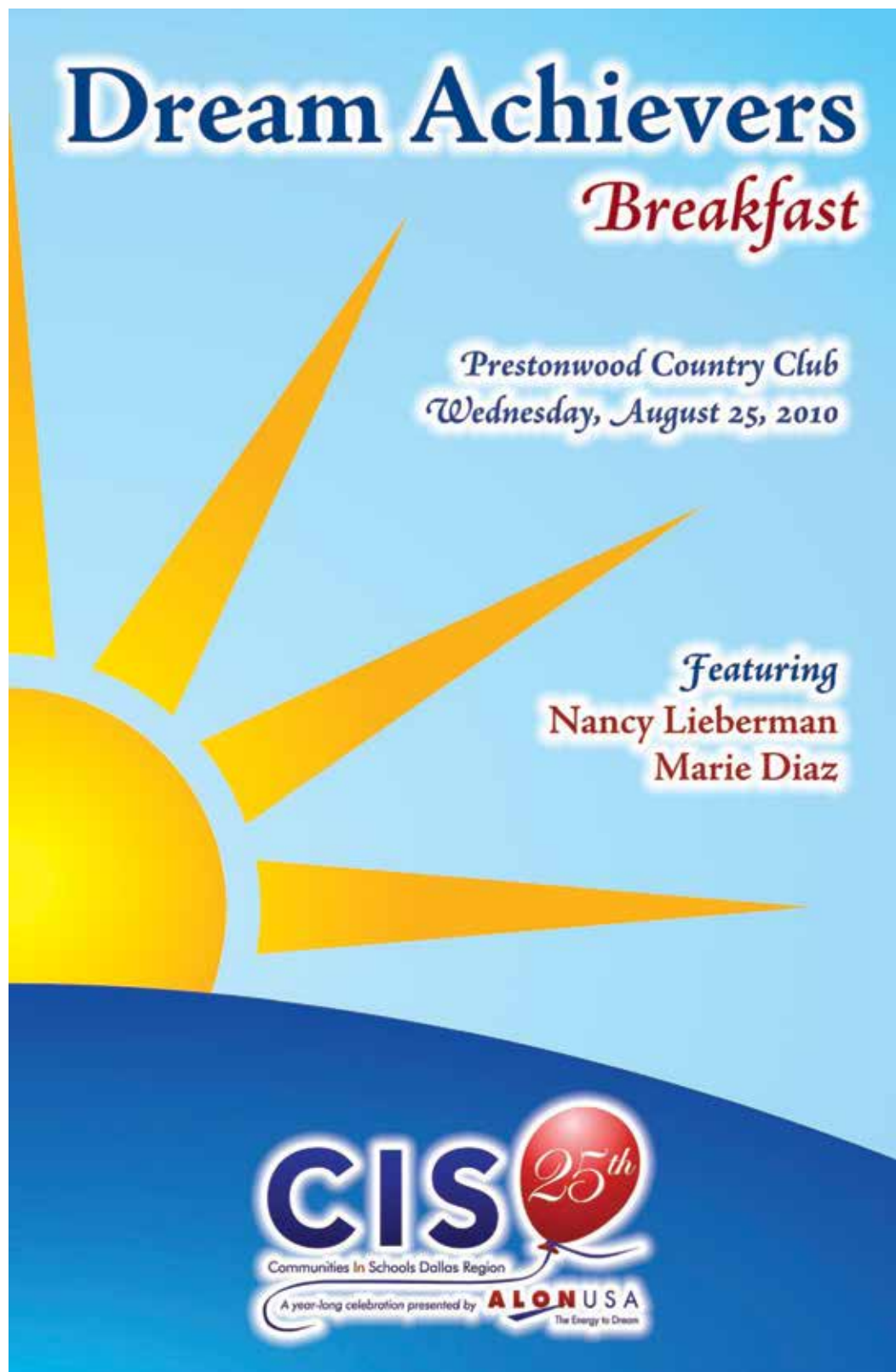
**CIS is my
personal
GPS to
academic
success!**

Communities In Schools Dallas Region



Do you have a GPS to get you to a place you've never been before? I have one too, right in my school, every day: Communities In Schools Dallas Region (CISDR). CIS is my personal GPS to academic success. This year, 12,000 students like me in the Dallas region had CIS to individually guide, support, tutor and help us through the school year. For 25 years, CIS has been the personal GPS for over 112,000 students, changing their destination to graduation and guiding them along the road to get there! CIS provides the traction students need, putting them on the road to success in school and in life.

Dream Achievers Breakfast Program



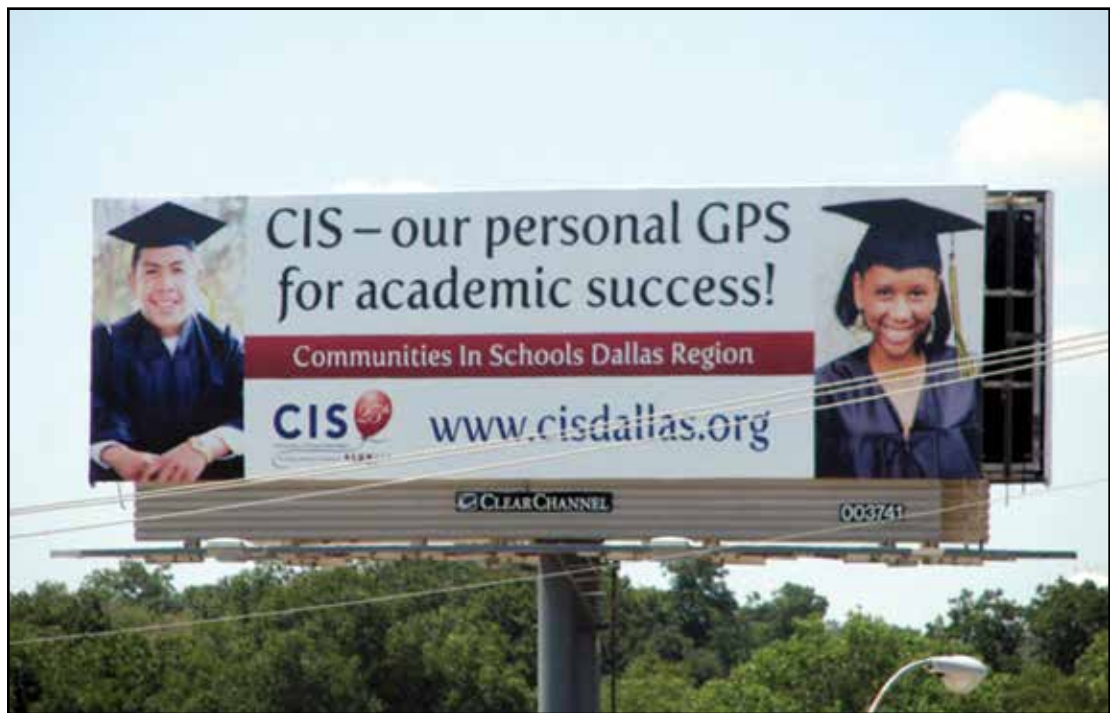
Map of German Brands

LexDellmeier
intellectual property law firm

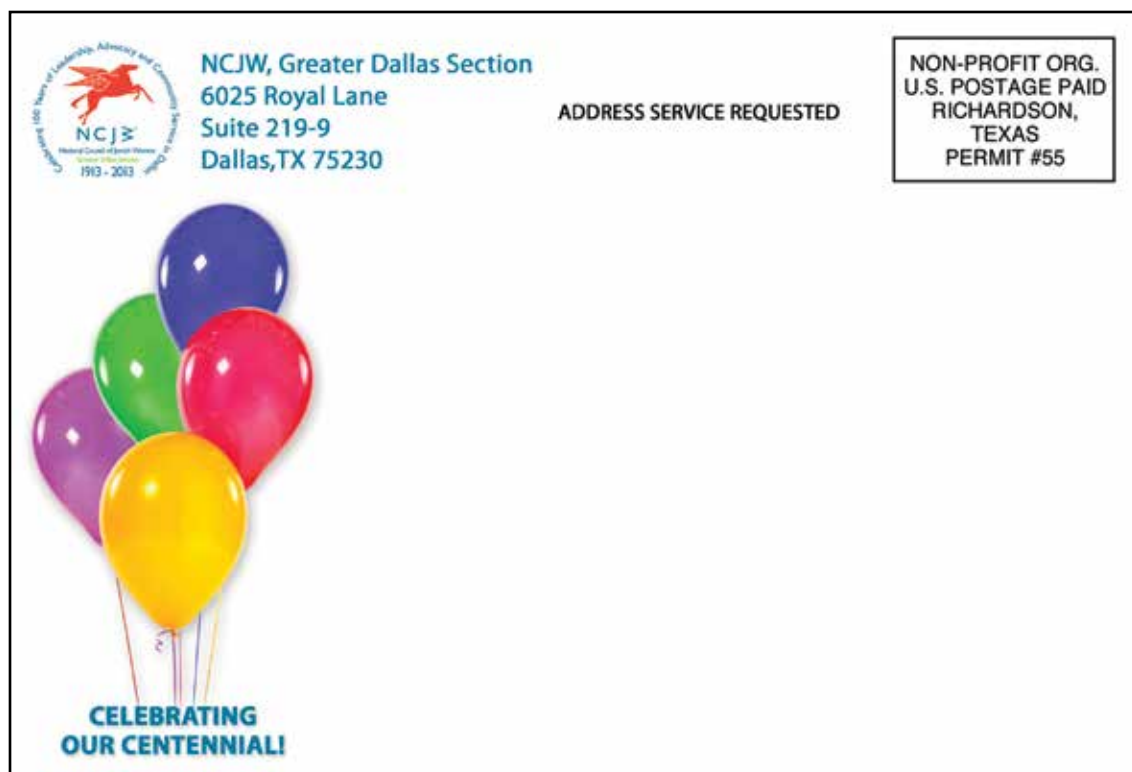
Deutsche Marken



CISDR Billboards



NCJW Luncheon "Save the Date"



CISDR Annual Report



2011-12 Annual Report



Christian Care Hospice Brochure

Covered Services

Clinical Management & Services

We provide all patient care, medication, medical supplies, and medical equipment related to the patient's diagnosis, as part of the Medicare or Medicaid hospice benefit. Many private insurance policies cover hospice care. Christian Care Hospice will also provide hospice care to patients not eligible for the Medicare and Medicaid hospice benefit and who do not have private insurance. This is possible through the generosity of the community through donations, bequests, memorials, and fund-raising efforts.



Personal Care Assistance

To lessen family burdens and provide patient dignity, our Hospice Health Assistants help with daily living activities.

- Personal Care Management
- Routine Breaks for Caregivers
- Incontinence Supplies

Emotional & Spiritual Support

Our professional counselors are dedicated to providing grief support to Christian Care Hospice patients, their families, and anyone in our community who has experienced the loss of a loved one. Our compassionate team of master-level counselors specializes in providing grief and loss support. Your counselor is available to you 24 hours a day/7 days a week.



The Christian Care Hospice Story

Christian Care Hospice opened in 2006 and became a certified and licensed agency. It is a part of a continuum of care that is highly reputable and faith-based organization, Christian Care Centers, Inc. Christian Care Hospice is a Medicare Certified and State Licensed Home Health Agency that provides 24-hour, on-call emergency consultation services in Dallas, Collin, Johnson, Kaufman, Rockwall, and Tarrant Counties.

Christian Care Hospice provides the following unique advantages to include:

Convenience and Comfort: We come to your home while you continue to enjoy the stability and security of familiar surroundings

Independence: Our assistance enables you to continue leading an independent lifestyle

Privacy and Confidentiality: Your services are delivered in the privacy of your home. Your dignity is preserved and confidentiality maintained

Faster Recovery: We know that a speedy recovery occurs best in your home

Flexibility: Our variety of services fulfills the orders of your physician and/or allows you to select the services that best meet your needs.

Experience, Professionalism and Caring: Our commitment to service is evidenced by a fully-trained and licensed staff eager to meet Medicare home care guidelines.

We also offer a wide and flexible variety of affordable, private-pay services.



What is Hospice Care?

The advanced stage of a serious illness can be the most vulnerable and challenging time a person or family will face. There are difficult decisions to make that you may never have thought about before. More than anything, you want your loved one to be comfortable, and your family comforted. Hospice helps patients and family members reclaim the spirit of life. It helps them understand that even though death can lead to sadness, anger, and pain, it can also lead to opportunities for reminiscence, laughter, reunion and hope.



How to Get Help

Referrals and requests for more information come from patients, families, friends, health care professionals, and spiritual counselors. Feel free to contact us 24 hours a day, 7 days a week for more information or to schedule a consultation

How to Contact Us

(817) 496-4730
Johnson and
Tarrant Counties

(972) 613-7945
Dallas, Collin, Kaufman,
Rockwall and Henderson Counties

or visit us online at
christiancarecenters.org/hospice



"Caring Is Our Calling"



The Christian Care Difference

Christian Care Hospice provides compassionate, comprehensive, high quality care to our patients and those who share their lives. The sooner we are contacted after diagnosis, the sooner we can help patients and their families treasure the life they have by surrounding them with all the support they need.

Physical. Emotional. Spiritual.



Who is Eligible for Hospice Care?

When medical treatments cannot cure an illness, Christian Care may be needed. A person may be eligible for hospice care when they have an estimated life expectancy of six months or less, and have chosen to focus on comfort care and the relief from pain and symptoms.

Where is Hospice Care Provided?

Every patient's circumstances are unique, a fact reflected in our individualized plans of care. Our team provides services in a variety of settings: at home, in an independent living complex, assisted living residence or skilled nursing facility, or in the hospital



The Christian Care Team

Christian Care Hospice provides compassionate care for the patient and family as a unit, using the skills and expertise of many disciplines.

The patient benefits from the clinical services of addressing the physical and comfort needs, social, emotional, and spiritual care, as well as interpersonal relationships with family and close friends. Making the choice to begin palliative (comfort) care allows the patient and family to remain together in the comfort and security of their home or in a home-like setting.

Once admitted to hospice the patient is served by a Care Team. The Care Team consists of:

- the primary care physician
- the hospice physician
- licensed nurse
- nursing assistant
- social worker
- grief counselors
- trained volunteers



Each one focused on tending to the patient's physical, psychosocial, spiritual and social needs. The patient's nurse, social worker and counselor are available for support, including visits to the home, on a 24-hour, 7-day a week basis.



Who Pays for Hospice Care?

We are experts in seeing patients and families through this most difficult stage of life; and our services are covered 100% by Medicare and Medicaid. Most private insurers cover a portion or all of our services. No one is denied care at Christian Care Hospice because of their inability to pay.



"Each one should use whatever gift he has received to serve others, faithfully administering God's grace in its various forms. If anyone serves, he should do it with the strength God provides."

— 1 Peter 4:10-11

Line Drive Luncheon Program



Communities In Schools Dallas Region

LINE DRIVE LUNCHEON

Featuring:

Texas Rangers' Manager
Ron Washington

Outfielder
David Murphy

and

Texas Baseball Hall of Famer
Talmage Boston



Communities
In Schools
Dallas Region, Inc.

Steve Lovelace
Writer. Artist. Photographer.

Home Art Business Life Nonfiction Technology About

Search

« Helvetica

» Food Deserts and Organic Superstores »

The Corporate States of America

Graphic Design

by Steve Lovelace | June 1, 2012



Update 6/30/13: Due to popular demand, I have added a complete list of all the brands on this map.

This is a map of “The Corporate States of America”. For each of the fifty states (and the District of Columbia), I selected a corporation or brand that best represented the states. My criteria are subjective, but in each case, I picked a brand that a) has ties to that state and b) is still in business (as of 2013).

I encountered several challenges while making this map. Major corporations are not evenly distributed across the country. Some states, such as New Mexico, Alaska, Montana and West Virginia, simply do not host many big corporations. Others host so many that choosing one was difficult. In these cases, I went with the company that I thought best represented the state, rather than the biggest or most notorious. Hence, I used **Dr Pepper** for Texas instead of ExxonMobil. I used **Apple** for California instead of Google or Facebook. I also had a problem with some of the smaller states like **Vermont** and **Delaware**. These states can be hard to read, so here is a complete list of the companies featured:

Alabama	Saks	The modern Saks descends from a company called Proffitt's, founded in Birmingham in 1919.
---------	------	---

About

My name is Steve Lovelace. I am a writer, graphic artist and photographer. I created this site to share my work with the world. New posts appear on Mondays and Thursdays.

Like this blog? Show your support with a secure online donation.

Donate

Trending

- The Corporate States of America
- Sharknado vs Shark NATO
- 5 Best New Arrested Development Characters
- Corporate Feudalism: The End of Nation States
- Famous Logos in Papyrus Font
- Famous Logos in Jokerman Font
- Famous Logos in Helvetica
- The United States of Dune
- Famous Logos in Algerian Font
- Portfolio

Recent Posts

- The Corporate States Map: A Follow-Up
- Sharknado vs Shark NATO
- When In Doubt, Reboot
- Redesign 101: The Flag of Ontario
- Neo-Feudalism in the Space Age
- Famous Logos in Wingdings
- Soda vs Pop (vs. Coke)
- The Little-Known 49-Star Flag
- The Dvorak Keyboard

